



Community College Facility Coalition  
1130 K Street, Suite 210  
Sacramento, CA 95814  
Voice: 916.446.3042 • Fax: 916.441.3893

### Officers

**Frank Gornick**, Chair  
West Hills CCD  
frankgornick@westhillscollge.com

**Jackie Fisher**, Vice-Chair  
Antelope Valley CCD  
jfisher@avc.edu

**Mansour Aliabadi**, Treasurer  
Vanir Construction Management, Inc.  
mansour.aliabadi@vanir.com

### Directors

**Kevin Cobb**  
AP Architects  
kcobb@addington.net

**Andy Dunn**  
Foothill-DeAnza CCD  
dunnandy@fhda.edu

**Curtis Groninga**  
Sonoma County CCD  
cgroninga@santarosa.edu

**Phillip Hartley**  
West Valley Mission CCD  
philip\_hartley@westvalley.edu

**Carol Horton**  
Citrus CCD  
chorton@citruscollege.edu

**Praful Kulkarni**  
gkkworks  
pmkulkarni@gkkworks.com

**Jon Sharpe**  
Los Rios CCD  
sharpej@losrios.edu

**Sherman Wong**  
Public Agency Law Group  
swong@palg.net

### Legislative Advocate

**Paul H. Holmes**  
phholmes@m-w-h.com

### Staff

**Shannon Mahoney**  
sfife@m-w-h.com

## President's message



Frank Gornick, Chair

The absence of a 2008 education bond has limited the state funding available for community colleges. CCFC will be kicking off a bond campaign fundraising drive this fall with planning already underway.

The state's precarious General Fund status is currently dominating the thinking in the State Capitol with the May 19 Special Election of particular concern. For our planning purposes we have to assume that the state's financial situation is resolved in a satisfactory way to enable normal planning to resume.

Two bills have been introduced in the Legislature which give us some hope that we are not the only optimists in the state. AB 220 (Brownley) was amended on April 14 to enact a K-University bond bill for the next statewide General Election (November 2010). The amount of the bond and the

*Continues on page 6 >>>*

## May 19 Election Cloud Hangs Over State and Local Funding

The Governor and Legislature handed off the resolution of the State's fiscal crisis to the electorate in the form of 6 measures on the May 19 Special Election ballot. The two major Propositions (1A and 1B) are partially interactive. If 1A fails, 1B can not be implemented; however, 1A can work without 1B passing.

Some political organizations (seemingly unaware of this interactivity) are advocating support for 1B and either

opposing 1A or taking a neutral position. Ironically, one major newspaper supports 1A and opposes 1B. Polling through late April suggested that all but 1F are at risk of losing.

It is difficult to assess the result of the major propositions failing, even though that appears to be the most likely scenario. An enormous cash shortage would immediately appear in the State General Fund. The Pooled Money Investment Board (PMIB)

*Continues on page 6 >>>*

## Legislature Passes 2009-10 Budget in Earliest Enactment in History

In mid February the Legislature passed its 18-month fiscal plan to close the state's gaping \$40+ billion revenue gap. There are many provisions in the total package, which included more than 20 separate bills. Among those bills was AB 1 of 3rd Extraordinary Session, which included the Governor's 2009-10 budget, virtually as submitted on January 9, 2009. That bill included the community college capital outlay projects as submitted by the Board of Governors and approved by the Department of Finance. The list of projects is itemized in Table 1.

Among other bills in the Budget package is a bill calling for a May 19, 2009 special election to approve several of the provisions to make the Budget package work.

There are 6 Propositions on the May 19 ballot, some of which are interdependent. For example, if Proposition 1A fails and Proposition 1B receives a majority vote, Proposition 1B cannot be implemented. Recent polling suggests that the critical budget balancing Propositions are likely to fail. If that occurs, there will be an enormous hole in state

revenues and the whole process of balancing the 18-month (now 13½-month) budget will begin anew. The previously enacted 2009-10 budget will certainly be subject to re-examination and change. The fate of the previously enacted community college projects would be uncertain.

There are four phases to a typical project: P for planning, W for working drawings, C for construction and E for equipment. It is possible to have all four phases funded in a single appropriation. ●

Table 1. Budget Act of 2009 Community College Capital Outlay Projects

DISTRICT/CAMPUS	PROJECT	PHASE	COST	PRIORITY	BOND
Antelope Valley CCD, Antelope Valley College	Health and Science Building	E	1,716,000	B	2006
Chabot-Las Positas CCD, Chabot College	Math-Science Modernization	PW	163,000	C	2006
Coast CCD, Orange Coast College	Music Building Modernization	PW	343,000	C	2004
El Camino CCD, El Camino College Compton Center	Infrastructure Replacement Phase 1 (H&S)	C	29,480,000	A4	2006
El Camino CCD, El Camino College Compton Center	Infrastructure Replacement Phase 2 (H&S)	PW	1,040,000	A4	2006
Imperial CCD, Imperial Valley College	Building 400 Modernization	PW	209,000	C	2006
Kern CCD, Bakersfield College	Performance Arts Modernization	PW	1,637,000	C	2006
Long Beach CCD, Long Beach City College, Pacific Coast Campus	Multi-Disciplinary Academic Building	CE	15,793,000	C	2006
Los Angeles CCD, East Los Angeles College	Fine and Performing Arts Center	E	2,824,000	D1	2006
Los Rios CCD, American River College	Life Science and Fine Arts Modernization	PW	128,000	C	2004
Los Rios CCD, Cosumnes River College	North East Buildings Modernization	PW	178,000	F	2006
Monterey Peninsula CCD, Monterey Peninsula College	Modernize Humanities, Business, and Student Services Buildings	PW	403,000	C	2006
Redwoods CCD, College of the Redwoods	New Science/Humanities Building Seismic Replacement	C	27,304,000	A3	2006
Riverside CCD, Moreno Valley Center	Phase III Student Academic Services Building	PW	437,000	E	2006
San Diego CCD, San Diego City College	Child Development Center	PW	594,000	D1	2002
San Mateo County CCD, Canada College	Electrical Infrastructure Replacement	PWC	3,838,000	A4	2006
San Mateo County CCD, Skyline College	Electrical Infrastructure Replacement	PWC	1,353,000	A4	2006
Santa Clarita CCD, College of the Canyons	Administration/Student Services	PW	236,000	E	2004
Sequoias CCD, College of the Sequoias	Administration Building Remodel for Efficiency	PW	603,000	F	2006
Sequoias CCD, Tulare Center	Phase I Site Development and Facilities	CE	55,414,000	B	2006
Siskiyou Joint CCD, College of the Siskiyou	Science Complex Modernization	CE	13,215,000	A4	2004
Sonoma County JCD, Santa Rosa Junior College	Health, Physical Education and Wellness Complex	PW	2,317,000	D1	2006
South Orange County CCD, Irvine Valley College	Life Sciences Building	CE	16,111,000	B	2006
State Center CCD, Fresno City College	Old Administration Building, North and East Wings, Phase III	PW	153,000	C	2004
Ventura County CCD, Ventura College	Buildings APP, S, and DP Modernization	CE	5,294,000	C	2004
Ventura County CCD, Ventura College	Studio Arts Building Modernization	PW	180,000	C	2006
West Valley-Mission CCD, District-wide	Fire Alarm System Replacement	C	11,793,000	A4	2002
Yuba CCD, Yuba College	Building 1100 Learning Resource Center Renovation	PW	877,000	C	2004

# State Funded Capital Outlay Project Status

State funded projects typically receive funding from the State Pooled Money Investment Account (PMIA), which is managed by the Pooled Money Investment Board (PMIB). When bonds are sold (usually in what is deemed to be a favorable bond market), the funds are placed in the PMIA along with surplus funds from special funds that are not needed immediately for current expenditures. Many construction bonds are sold long after the projects have been completed. Because of the enormous state deficit, California had not sold any General Obligation Bonds since July 2008.

The state's fiscal problems were reflected in early December 2008 when the PMIB froze disbursement of construction funds from the PMIA, due to the state's pending severe cash squeeze. This brought all projects using state funds to a halt.

After the Legislature and Administration agreed upon and enacted a budget and deficit resolution package in mid-February 2009, the Treasurer was able to return to the bond market in late March with a sale of \$6.5 billion of General Obligation Bonds and again in late April with another sale of

\$6.8 billion on General Obligation Bonds.

Initially, the PMIB exempted selected capital outlay projects from the freeze. The release of the funds for the community college exempted projects enabled the projects listed in Table 2 to have their remaining fund entitlement disbursed (amount in right hand column).

After the sale of bonds by the Treasurer, additional projects were entitled to be funded as noted in Table 3. ●

3

**Table 2. Community College Project Funds Exempted by PMIB**

DISTRICT	PROJECT	APPROPRIATION	NOT YET APPROVED PHASE	NOT YET CLAIMED	TOTAL UNCLAIMED
Allan Hancock CCD	Science Health Occupations Complex	15,541,000	-	87,375	87,375
Allan Hancock CCD	Skill Center Replacement	5,500,000	-	48,777	48,777
Chabot-Las Positas CCD	Multi-Disciplinary Education Building	11,163,000	-	19,685	19,685
Contra Costa CCD	Math, Science, Technology Building	20,547,000	-	1,258,575	1,258,575
El Camino CCD	Humanities Building Replacement	2,686,000	-	23,535	23,535
Foothill-De Anza CCD	Chemistry Bldg Conversion to Math Lab	836,000	-	516,884	516,884
Foothill-De Anza CCD	Kirsch Center for Environmental Studies	410,000	-	45,651	45,651
Foothill-De Anza CCD	Life Sciences	9,645,000	-	1,564,000	1,564,000
Foothill-De Anza CCD	Seismic Replacement-Field Locker Rooms	1,621,000	14,000	3,500	17,500
Foothill-De Anza CCD	Seismic Replacement-Maintenance Building	955,000	29,000	3,100	32,100
Foothill-De Anza CCD	Seismic Replacement-Student Services	658,000	-	658,000	658,000
Grossmont -Cuyamaca CCD	Communication Arts Building	14,719,000	-	517,331	517,331
Grossmont -Cuyamaca CCD	New Digital Arts Labs	4,869,000	-	22,161	22,161
Long Beach CCD	Industrial Technology Center-Manufacturing	10,124,000	808,000	3,618,671	4,426,671
Los Angeles CCD	Jefferson Hall Modernization	344,000	-	344,000	344,000
Los Angeles CCD	Jefferson Hall Modernization	3,680,000	3,680,000	-	3,680,000
Los Rios CCD	Police, Print and Office Building	1,991,000	30,000	5,174	35,174
Merced CCD	Site Development and Permanent Facilities	10,167,000	-	370	370
Mira Costa CCD	Horticulture Project	5,838,000	-	67,419	67,419
Monterey Peninsula CCD	Child Development Center	4,117,000	-	9,820	9,820
Mt. San Jacinto CCD	Technology Building	10,775,000	-	190,287	190,287
Rancho Santiago CCD	Learning Resource Center	709,000	-	4,858	4,858
Rancho Santiago CCD	Physical Education Seismic Replacement/Expansion	69,000	-	3,551	3,551
Riverside CCD	Quadrangle Building Modernization	12,554,000	-	45,839	45,839
San Diego CCD	Seismic Retrofit, District Headquarters	4,683,000	-	157,259	157,259
San Jose / Evergreen CCD	Arts Complex	1,848,000	-		





**Table 2 (Continued). Community College Project Funds Exempted by PMIB**

DISTRICT	PROJECT	APPROPRIATION	NOT YET APPROVED PHASE	NOT YET CLAIMED	TOTAL UNCLAIMED
San Jose / Evergreen CCD	Applied Sciences Center	4,166,000	-	278,124	278,124
San Mateo Co. CCD	Library/LRC/Student Services Center	3,360,000	-	45,139	45,139
Santa Clarita CCD	Laboratory Expansion	7,721,000	-	567,254	567,254
Santa Clarita CCD	Physical Education Addition	2,954,000	-	13,400	13,400
Sierra Jt. CCD	Construct New Classroom/Labs	2,564,000	-	232,008	232,008
Sonoma Co. CCD	Petaluma Center, Phase 2	26,121,000	-	2,318,581	2,318,581
Southwestern CCD	Music Buildings 800/850 Remodel	3,005,000	-	175,550	175,550
Southwestern CCD	Phase One Buildings	3,033,000	-	231,460	231,460
State Center CCD	Academic Facilities & Site Development Phase I	3,920,000	-	952,495	952,495
Ventura Co. CCD	Reconstruction of Library Building	2,956,000	-	74,280	74,280
West Kern CCD	Child Development Center	2,501,000	-	139,000	139,000
Yosemite CCD	Auditorium Renovation/Expansion	12,450,000	-	322,490	322,490
Yuba CCD	Engineering, Math & Science	7,651,000	-	56,360	56,360
Yuba CCD	Learning Resources/Technology Center	21,057,000	-	1,081,956	1,081,956
Yuba CCD	Liberal Arts Modernization	3,202,000	31,000	101,710	132,710
<b>TOTALS</b>		<b>262,710,000</b>	<b>4,592,000</b>	<b>15,805,627</b>	<b>20,397,627</b>

**Table 3. Community College Project Funds Released After Treasurer's Bond Sale**

DISTRICT	PROJECT DESCRIPTION	PROJECT	APP YEAR	CLAIM AMOUNT
Antelope Valley	Health & Science Building	40.03.115.3	2007	\$28,208.14
Antelope Valley	Theater Arts Facilities	40.03.114.2	2006	\$24,500.00
Antelope Valley	Theater Arts Facilities	40.03.114.2	2006	\$184,108.08
Antelope Valley	Theater Arts Facilities	40.03.114.2	2006	\$24,082.00
Butte-Glenn	Instructional Arts Building	40.05.108.1	2006	\$1,856,681.50
Butte-Glenn	Instructional Arts Building	40.05.108.1	2006	\$310,676.01
Cabrillo	Visual/Performing Arts Complex	40.06.111.3	2004	\$289,225.80
Chabot-Las Positas	Language Arts Learning Skills Modernization	40.62.115.25	2006	\$1,244,571.78
Chabot-Las Positas	Language Arts Learning Skills Modernization	40.62.115.25	2006	\$648,741.71
Chaffey	Fontana Center Phase III, Academic Building	40.08.201.7	2007	\$162,621.20
Chaffey	Health/Physical Science Bldg Renovation	40.08.112.1	2006	\$63,349.42
Chaffey	Health/Physical Science Bldg Renovation	40.08.112.1	2006	\$86,850.00
Citrus	Student Services Building	40.09.126.3	2006	\$1,197,075.22
Citrus	Student Services Building	40.09.126.3	2006	\$227,704.87
Citrus	Vocational Technology Building	40.09.123.2	2006	\$11,446.90
Citrus	Vocational Technology Building	40.09.123.2	2006	\$921,692.27
El Camino	Learning Resource Center	40.14.110.7	2005	\$714,861.04
Feather River College	Learning Resource Center and Technology Building	40.73.105.22	2006	\$24,719.29
Grossmont-Cuyamaca	Business/CIS Building	40.19.118.4	2006	\$980,759.37
Grossmont-Cuyamaca	Business/CIS Building	40.19.118.4	2006	\$1,273,976.77
Grossmont-Cuyamaca	Health Sciences Building	40.19.210.5	2006	\$29,022.30
Grossmont-Cuyamaca	Science & Technology Mall	40.19.116.23	2003	\$51,053.63
Grossmont-Cuyamaca	Science & Technology Mall	40.19.116.23	2003	\$2,956.32
Hartnell	Center for Applied Technology	40.20.103.6	2006	\$132,000.00
Kern	Wellness Center	40.22.307.8	2006	\$585,646.42
Kern	Wellness Center	40.22.307.8	2006	\$49,573.63
Kern	Science Modernization	40.22.215.7	2006	\$19,000.00
Lake Tahoe	Learning Resource Center	40.23.111.30	2003	\$194,111.33
Long Beach	Multi-Disciplinary Academic Building	40.25.117	2007	\$46,355.00
Long Beach	Multi-Disciplinary Academic Building	40.25.117	2007	\$371,891.93




**Table 3 (Continued). Community College Project Funds Released After Treasurer's Bond Sale**

DISTRICT	PROJECT DESCRIPTION	PROJECT	APP YEAR	CLAIM AMOUNT
Long Beach	Multi-Disciplinary Academic Building	40.25.117.14	2007	\$27,629.41
Long Beach	Library/LRC	40.25.119.11	2005	\$262,367.34
Long Beach	Library/LRC Renovation/Addition	40.25.201.12	2006	\$503,295.31
Long Beach	Library/LRC Renovation/Addition	40.25.201.12	2006	\$209,735.70
Long Beach	Library/LRC Renovation/Addition	40.25.201.12	2006	\$1,134,725.52
Los Angeles	Child Development Center	40.26.804.13	2006	\$431,053.26
Los Angeles	Culinary Arts Center	40.26.413.10	2006	\$1,148,874.81
Los Angeles	Franklin Hall Modernization	40.26.208.9	2006	\$212,036.87
Los Angeles	Franklin Hall Modernization	40.26.208.9	2006	\$725,627.96
Los Angeles	Franklin Hall Modernization	40.26.208.9	2006	\$85,963.13
Los Angeles	Physical Education Building Renovation	40.26.510.11	2006	\$1,876,587.29
Los Angeles	Renovate and Modernize Building A	40.26.703.12	2006	\$700,776.00
Los Angeles	Building F Structural Repairs	40.26.704.1	2005	\$303,127.81
Los Rios	Fine Arts Instructional Space, Expansion	40.27.105.7	2006	\$43,011.00
Los Rios	Fine Arts Instructional Space, Expansion	40.27.105.7	2006	\$16,600.00
Los Rios	Library Expansion	40.27.106.21	2007	\$9,855.00
Los Rios	Fine Arts Instructional Building	40.27.504.20	2005	\$960,288.50
Merced	Allied Health Center	40.30.119.15	2006	\$94,440.92
Merced	Allied Health Center	40.30.119.15	2006	\$414,519.78
Mira Costa	Creative Arts Expansion	40.31.111.1	2006	\$829,611.48
Mira Costa	Creative Arts Expansion	40.31.111.1	2006	\$9,899.03
Mira Costa	Creative Arts Expansion	40.31.111.1	2006	\$16,290.00
Mira Costa	Creative Arts Expansion	40.31.111.1	2006	\$761,622.22
Mt. San Antonio	Administration Building Remodel	40.33.117.25	2007	\$306,812.88
Mt. San Antonio	Administration Building Remodel	40.33.117.25	2007	\$10,045.72
Mt. San Antonio	Administration Building Remodel	40.33.117.25	2007	\$55,000.00
Mt. San Antonio	Remodel Classrooms Buildings	40.33.113	2003	\$32,983.98
Napa Valley	Library/Learning Resource Center	40.35.104.17	2006	\$5,665,834.00
North Orange County	Humanities Building 1 Renovation	40.36.102.18	2006	\$1,891,628.55
North Orange County	South Science Building Replacement	40.36.203.19	2006	\$492,258.44
North Orange County	South Science Building Replacement	40.36.203.19	2006	\$1,268,333.21
North Orange County	Technology and Engineering Complex	40.36.204.27	2007	\$998,620.81
North Orange County	Technology and Engineering Complex	40.36.204.27	2007	\$1,442,929.51
Ohlone	Below Grade Water Intrusion Repair	40.16.113	2007	\$101,000.00
Rio Hondo	Physical Education Facilities	40.43.109.20	2006	\$28,081.76
Rio Hondo	Applied Technology Building Reconstruction	40.43.106.2	2006	\$480,157.93
Riverside	Industrial Technology Facility, Phase III	40.44.308.21	2006	\$1,154,576.35
Riverside	Nursing/Science Building	40.44.104	2007	\$60,586.50
Riverside	Nursing/Science Building	40.44.104	2007	\$405,817.40
San Francisco	John Adams Modernization	40.48.201.32	2005	\$2,472,996.60
San Francisco	John Adams Modernization	40.48.201.32	2005	\$4,510,129.50
San Joaquin-Delta	Goleman Learning Resource Center Modernization	40.49.108.17	2006	\$45,449.79
San Joaquin-Delta	Goleman Learning Resource Center Modernization	40.49.108.17	2006	\$12,964.48
San Luis Obispo	Theater Arts Building	40.51.112.4.5	2006	\$3,688,274.42
San Mateo	Allied Health Vocational Training Center	40.52.310.5	2006	\$203,282.68
San Mateo	Allied Health Vocational Training Center	40.52.310.5	2006	\$646,798.79
San Mateo County	Demolition of Seismic Hazardous Buildings	40.52.208.1	2007	\$345,000.00
San Mateo County	Facility Maintenance Center	40.52.104.22	2006	\$35,456.00
San Mateo County	Facility Maintenance Center	40.52.104.22	2006	\$1,120,542.55
San Mateo County	Facility Maintenance Center	40.52.309.23	2006	\$780,671.24
San Mateo County	Reconstruction of Academic Facilities	40.52.105	2007	\$92,000.00
Santa Clarita	University Center	40.54.115.24	2006	\$3,897,057.55





**Table 3 (Continued). Community College Project Funds Released After Treasurer's Bond Sale**

DISTRICT	PROJECT DESCRIPTION	PROJECT	APP YEAR	CLAIM AMOUNT
Santa Clarita	University Center	40.54.115.24	2006	\$72,976.81
Santa Clarita	University Center	40.54.115.24	2006	\$41,130.33
Santa Clarita	University Center	40.54.115.24	2006	\$2,291,173.24
Santa Clarita	Classroom/High Tech Center	40.54.112.69	2003	\$14,101.34
Santa Clarita	Library Addition	40.54.116.41	2007	\$247,000.00
Sequoias	Nursing and Allied Health Center	40.56.115.19	2006	\$14,020.10
Sequoias	Nursing and Allied Health Center	40.56.115.43	2007	\$367,061.04
Sequoias	Nursing and Allied Health Center	40.56.115.43	2007	\$532,680.05
Sequoias	Phase I Site Development and Facilities	40.56.200.23	2008	\$559,172.60
Sequoias	Phase I Site Development and Facilities	40.56.200.44	2007	\$187,383.97
Sequoias	Phase I Site Development and Facilities	40.56.200.44	2007	\$61,455.00
Shasta Tehama Trinity	Library Addition	40.57.103.45	2007	\$1,284,797.39
State Center	Academic Facilities, Phase II	40.64.501.27	2006	\$3,365,136.83
Ventura County	Health Science Expansion/Replacement	40.65.113.28	2006	\$154,601.30
Ventura County	Health Science Expansion/Replacement	40.65.113.28	2006	\$48,620.12
Ventura County	Health Science Expansion/Replacement	40.65.113.28	2006	\$132,804.68
Ventura County	OCTV Auditorium	40.65.207.29	2006	\$170,533.00
Ventura County	OCTV Auditorium	40.65.207.29	2006	\$606,991.50
Victor Valley	Seismic Replacement Auxiliary Gym	40.66.116.48	2005	\$839,424.17
West Hills	Multi-Use Sports Facility	40.67.206.31	2006	\$92,578.93
West Kern	Science Modernization	40.68.103.49	2005	\$43,401.88
West Kern	TIL Center	40.68.105.7	2007	\$33,600.00
West Valley-Mission	Math and Science Replacement	40.69.106.50	2007	\$809,994.55
West Valley-Mission	Science and Math Building Renovation	40.69.110.20	2006	\$24,940.00
West Valley-Mission	Science and Math Building Renovation	40.69.110.20	2006	\$446,167.32
<b>TOTAL</b>				<b>\$67,222,437.06</b>

>>> Comes from page 1  
**President's Message**

division between entities is not specified as of yet. The other measure is SB 271 (Ducheny) which was amended on May 6 to provide an \$8.63 Billion higher education bond for the November 2, 2010 General Election. SB 271 currently reflects a four year allocation for the community colleges at \$4.1 Billion.

During the legislative process these bills will likely be amended many times, with a single bill surviving as a K-University all inclusive education bond bill. The current bills are not without muscle, since Assembly Member Brownley is chair of the Assem-

bly Committee on Education and Assembly Member Ducheny is Chair of the Senate Committee on Budget and Fiscal Review.

We need to show our strong support for these measures as an organization and as individual districts.

If there is no bond that emerges as a result of this legislative session the best advice the Coalition has for its members is to concentrate on your facilities plans so that they reflect greater usage of space. If the scenario of no bond prevails, district projects will become much more competitive. This translates into matches of 50 percent with an emphasis on how efficient a

district is at using their allocated space to gain maximum points.

Remember to vote! ●

>>> From page 1  
**State and Local Funding**

would almost certainly re freeze project allocations for state funded projects. Elimination of all capital outlay appropriations from the 2009 Budget Act would be another possibility.

Obviously, a lot is at stake for community colleges and many others with the outcome of the May 19 election. ●

# Local Bond Capacity Growth Clearly Decelerating

In the May 2008 CCFC Courier we discussed the impact of the housing crisis on the near term local district bond capacity. Since then, new statewide data is available adding an additional year of information to the chart we presented in that newsletter. The chart below shows that same chart with additional data regarding 2008 assessed valuations.

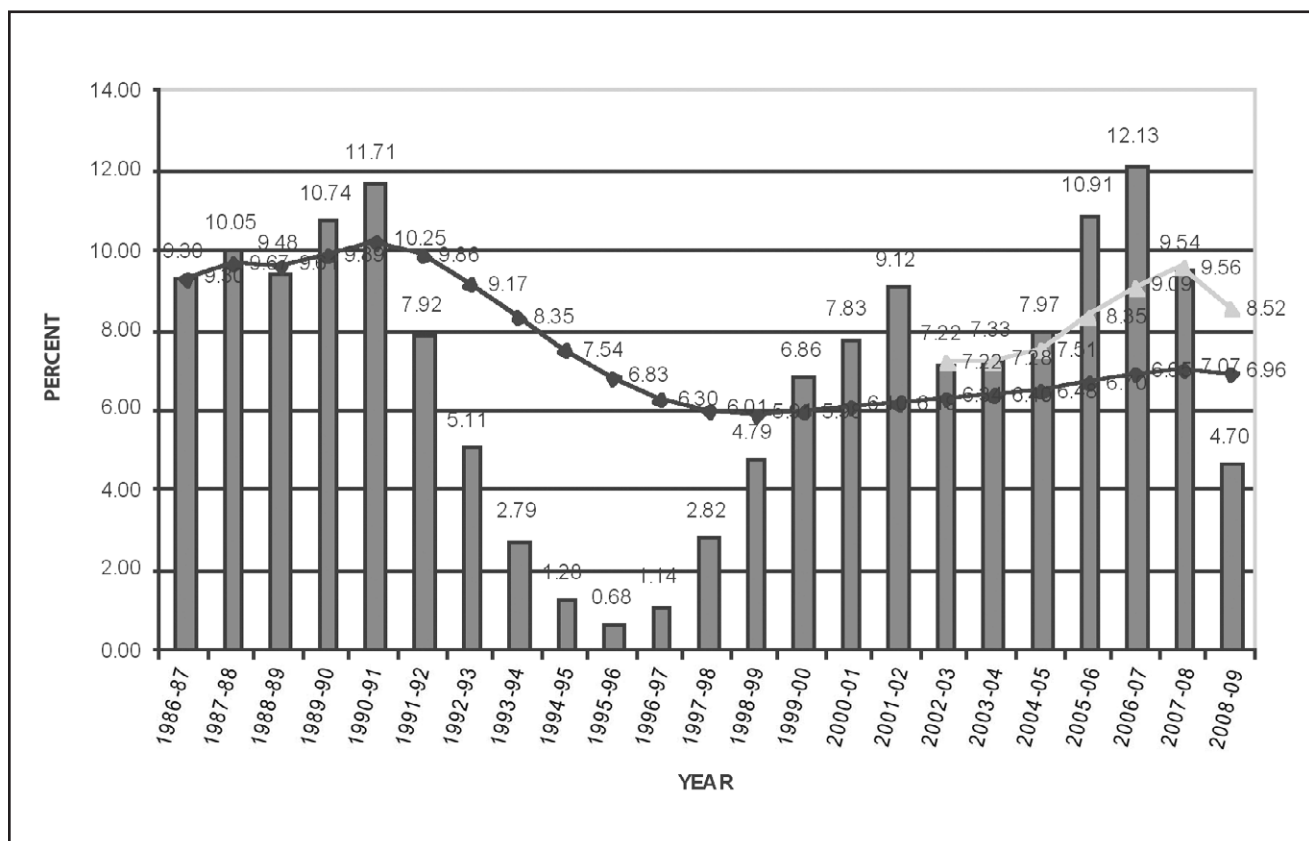
This chart shows the annual growth rate of assessed valuation in the state from 1985-86 through 2008-09. The dip in the middle of the chart shows what happened to assessed values of property during the recession of the early 1990s. The drop in state revenues occurred in 1991-92, but there was a substantial delay in the drop in

assessed values. It is likely that the pattern of the mid 1990s will be repeated over the next several years. It is very likely that the data for 2008-09 is equivalent in the current pattern to the data for 1992-93. In 2008-09 six counties actually experienced a decrease in assessed valuation (Merced, San Benito, San Joaquin, Solano, Stanislaus and Yuba). Most county growth rates dropped by more than half of the rate that the counties experienced in 2007-08.

Anecdotal information gleaned from various news articles suggest that the data for 2009-10 will be even worse. San Luis Obispo County will experience a decline for the first time in 3 decades. Los Angeles County is expect-

ed to experience a 1% decline, while San Francisco will experience only a 1% growth. Some speculation suggests that some counties in the San Joaquin Valley could decline as much as 10% in 2009-10.

Local governments realize declining support revenues due to reduced property taxes, but the issuance of local bonds in this environment becomes problematic. Many districts have issued 55% bonds based on optimistic assessed valuation growth rates. Since these bonds require a tax rate limitation, future issuances will necessarily need to be reduced in order to reflect the anticipated lower assessed valuation growth rates. ●



May, 2009



Community College Facility Coalition

Community College Facility Coalition  
1130 K Street, Suite 210  
Sacramento, CA 95814  
Voice: 916.446.3042 • Fax: 916.441.3893

RETURN SERVICE REQUESTED

For more info visit our website [www.caccfc.org](http://www.caccfc.org)

**CCFC**

## Membership

CCFC is a statewide coalition composed of community college district facility planners, architects, developers, financial institutions, attorneys and consultants.

Our major purpose is to advocate for adequate State and local revenues for facility construction and to provide comprehensive information regarding community college construction and funding issues. Our highest priorities are:

- Increasing the funding level provided for community college capital outlay.
- Modifying the approval process to permit quicker approval and construction of needed facilities.

- Providing information to districts regarding changes and new requirements in the approval process.
- Identifying alternative funding sources for community college facilities.

It is our aim to include as many colleges as possible as members of the coalition, as well as those business entities that are involved in the community college facility

process. With the membership of college presidents, facilities specialists and business entities, we believe a formidable alliance can be forged.

We believe membership in this coalition is important to your facility program.

For more information about joining CCFC, please visit our website at [www.caccfc.org](http://www.caccfc.org) or call the CCFC office at (916) 446-3042. ●

### Fee Schedule

**Community College Districts**  
*(based on your Full Time Enrollment)*

0-4,999	\$ 550
5,000-14,999	\$ 825
15,000 +	\$1,100

**Organizations**  
Corporations, including private companies and consultants

\$ 600

Affiliated Organizations  
(other government agencies)

\$ 550